



Model SVB4W

SPILL RESISTANT VACUUM BREAKER

Job Name:	Contractor:
Job Location:	P.O. Number:
Engineer:	Representative:
Tag:	Wholesale Distributor:

DESCRIPTION

The Apollo® Model SVB4W Spill Resistant Vacuum Breaker is designed to prevent contamination of potable water due to back-siphonage. The SVB4W is ideally suited for continuous pressure, indoor applications where water spillage is undesirable.

FEATURES

- Corrosion resistant
- Low head loss
- In-line flow
- Integral shut-off valves
- Easy to maintain
- MADE IN THE USA



MATERIAL SPECIFICATIONS

Part Name	Material
Body	Noryl (Brass retainers)
Valve Canopy	ABS Plastic
Seat Discs	Silicone Rubber
Float	Acetal
Springs	Stainless Steel

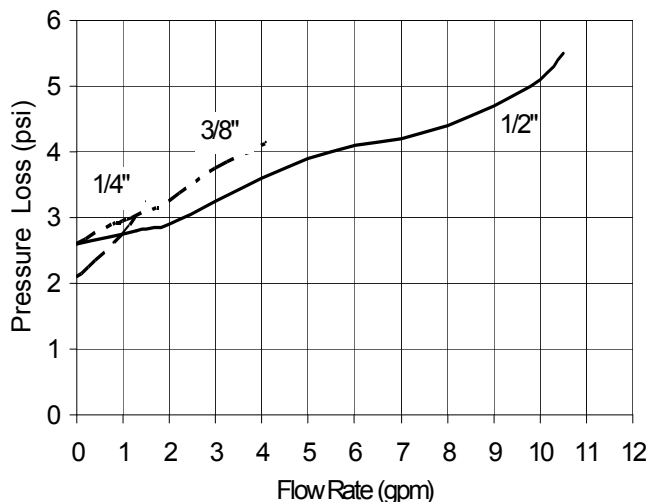
APPROVALS

ASSE® 1056, CSA® B64.1.2, USC's FCCC&HR and IAPMO®

PERFORMANCE RATING

Maximum Operating Pressure 150 psi
Temperature Range 33 °F – 180 °F

FLOW CURVES



ORDERING INFORMATION

4 W - 5 0 X - 0 2

SIZE

SIZE

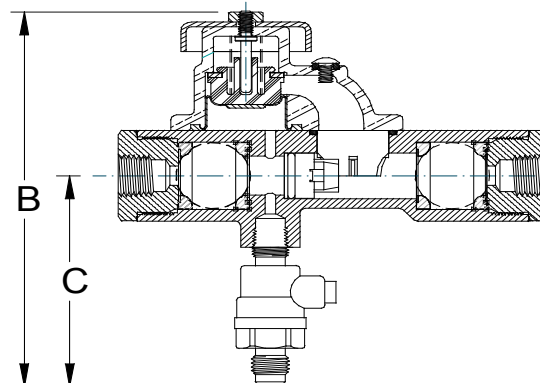
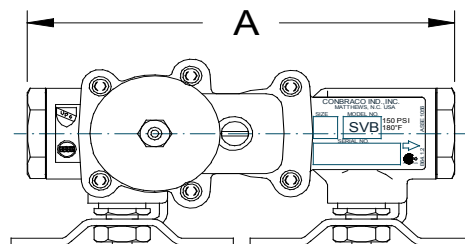
☐ 1 - 1/4" ☐ 2 - 3/8" ☐ 3 - 1/2"

Note: Test Cock includes 1/4" SAE flare fitting for all sizes

Example: 4W-501-02 = 1/4" SVB4W

DIMENSIONS (in.)

Size	A	B	C	Wt. (lb.)
1/4"	4.92	4.87	2.74	1.2
3/8"	4.92	4.87	2.74	1.2
1/2"	4.92	4.87	2.74	1.1



Conbraco Industries, Inc. 701 Matthews Mint Hill Rd. Matthews NC 28105 USA; www.apollovalves.com; 704-841-6000

This specification is provided for reference only. Conbraco reserves the right to change any portion of this specification without notice and without incurring obligation to make such changes to Conbraco products previously or subsequently sold.

SS1044 ©3/10 Page 1 of 1