

# DPE SERIES DRIP PAN ELBOW

Job Name:	Contractor:
Job Location:	P.O. Number:
Engineer:	Representative:
Tag:	Wholesale Distributor:

## DESCRIPTION

Drip Pan Elbows connect to the safety valve outlet and direct steam discharge into the discharge piping, allowing condensate to drain away. Isolates the valve from piping stresses. Highly recommended in steam service.

## FEATURES

- ☐ Black corrosion resistant finish
- ☐ 3/4" thru 8" Inlet connections

## MATERIALS

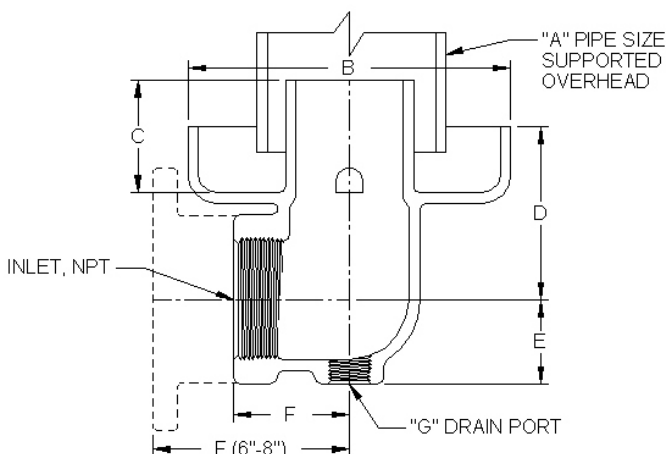
Cast Iron, ASTM A126-B

## ORDER NUMBER

DPE- Suffix

### Suffix Options

- ☐ 07 = 3/4" NPT Inlet
- ☐ 10 = 1" NPT Inlet
- ☐ 12 = 1-1/4" NPT Inlet
- ☐ 15 = 1-1/2" NPT Inlet
- ☐ 20 = 2" NPT Inlet
- ☐ 25 = 2-1/2" NPT Inlet
- ☐ 30 = 3" NPT Inlet
- ☐ 40 = 4" NPT Inlet
- ☐ 60 = 6" ANSI Class 125 Flange
- ☐ 80 = 8" ANSI Class 125 Flange



APOLLO PART #	INLET in (mm)	A in (mm)	B in (mm)	C in (mm)	D in (mm)	E in (mm)	F in (mm)	G NPT	WEIGHT LB (kg)
DPE07	3/4 (20)	2.00 (51)	3.75 (95)	1.88 (48)	2.00 (51)	1.00 (25)	1.50 (38)	1/4	2 (1)
DPE10	1 (25)	2.00 (51)	3.75 (95)	1.88 (48)	2.00 (51)	1.00 (25)	1.50 (38)	1/4	2 (1)
DPE12	1-1/4 (32)	2.00 (51)	5.50 (140)	2.47 (63)	4.13 (105)	1.44 (37)	2.13 (54)	3/8	7.5 (3)
DPE15	1-1/2 (40)	2.00 (51)	5.50 (140)	2.47 (63)	4.13 (105)	1.44 (37)	2.13 (54)	3/8	7.5 (3)
DPE20	2 (50)	3.00 (76)	6.25 (159)	2.31 (59)	3.63 (92)	1.63 (41)	2.25 (57)	1/2	8.5 (4)
DPE25	2-1/2 (65)	4.00 (102)	7.38 (187)	3.00 (76)	4.31 (109)	1.94 (49)	2.69 (68)	3/4	12 (5)
DPE30	3 (80)	4.00 (102)	8.00 (203)	3.50 (89)	4.88 (124)	2.31 (59)	3.13 (80)	3/4	19 (9)
DPE40	4 (100)	6.00 (152)	9.63 (245)	4.50 (114)	5.75 (146)	2.88 (73)	3.75 (95)	3/4	25 (11)
DPE60	6 (150)	8.00 (203)	12.75 (324)	6.63 (168)	7.44 (189)	4.19 (106)	8.00 (203)	3/4	105 (48)
DPE80	8 (200)	10.00 (254)	16.50 (419)	7.50 (191)	9.44 (240)	5.38 (137)	10.75 (273)	1	202 (92)

Conbraco Industries, Inc. 701 Matthews Mint Hill Rd. Matthews NC 28105 USA ; [www.apollovalves.com](http://www.apollovalves.com) ; 704-841-6000

This specification is provided for reference only. Conbraco reserves the right to change any portion of this specification without notice and without incurring obligation to make such changes to Conbraco products previously or subsequently sold.